



# American Water Chemicals, Inc.

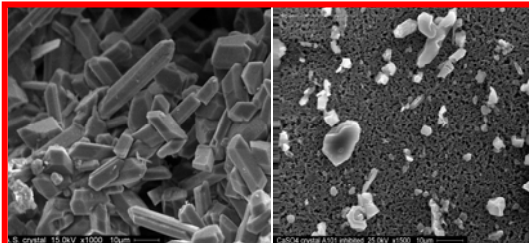
High Performance Membrane Antiscalants and Cleaning Chemicals

9203-A King Palm Drive, Tampa, FL 33619, USA  
Tel: (813) 246-5448 - Fax: (813) 621-4085  
www.membranechemicals.com

## AQUACARE-A-101 R.O. Membrane Antiscalant – High Calcium Sulfate

### Advantages

- **AQUACARE-A-101** is a broad spectrum antiscalant designed to inhibit formation of inorganic scales in membrane separation processes.
- **AQUACARE-A-101** is highly effective on R.O. feed water having a high calcium sulfate scaling potential.
- **AQUACARE-A-101** stops crystal growth of calcium sulfate scale.  $\text{CaSO}_4 \cdot 2\text{H}_2\text{O}$  scale is extremely difficult to remove once it has formed on an RO membrane.
- **AQUACARE-A-101** often surpasses the performance of other antiscalants under stressed conditions of high pH.
- **AQUACARE-A-101** effectively stabilizes metal ions to prevent fouling of the membrane.
- **AQUACARE-A-101** has been approved by the National Sanitation Foundation (NSF) for the production of potable water in membrane separation processes.
- **AQUACARE-A-101** is environmentally compatible, especially where discharge of waste into the environment is a concern.



**Left:** Calcium sulfate crystal formation in the absence of antiscalant  
**Right:** Distorted calcium sulfate crystals that form in the presence of A-101 when  $\text{CaSO}_4$  saturation in the brine exceeds 1000% of the maximum saturation level. The distorted structure prevents formation of a continuous crystal lattice, and minimizes adhesion to the membrane surface

### Typical Properties

<b>Appearance</b> . . . . .	Clear yellow to amber liquid
<b>Odor</b> . . . . .	Characteristic Odor
<b>Solubility in water</b> . . . . .	Complete
<b>pH (as is) @ 25°C</b> . . . . .	5 – 7
<b>Specific Gravity</b> . . . . .	1.20 ± 0.03

### Safety and Handling

Store in a cool, dry place. In accordance with good safety practice, handle with care and avoid contact with eyes and prolonged or repeated contact with skin. For more information, see the Material Safety Data Sheet provided with this product.

### Chemical Feeding and Control

**AQUACARE-A-101** is normally fed continuously prior to the final cartridge filter. It should be injected by chemical dosing pump from a dilution tank or directly from the drum to the feed water line. The amount of **AQUACARE-A-101** required to inhibit scale formation depends on the quality of feed water and size of the membrane system. The specific dosage rates will be specified by your AWC technical representative.

### Packaging

**AQUACARE-A-101** is packaged in 55 gallon, non-returnable plastic drums.

ISO 9001 Certified Company

